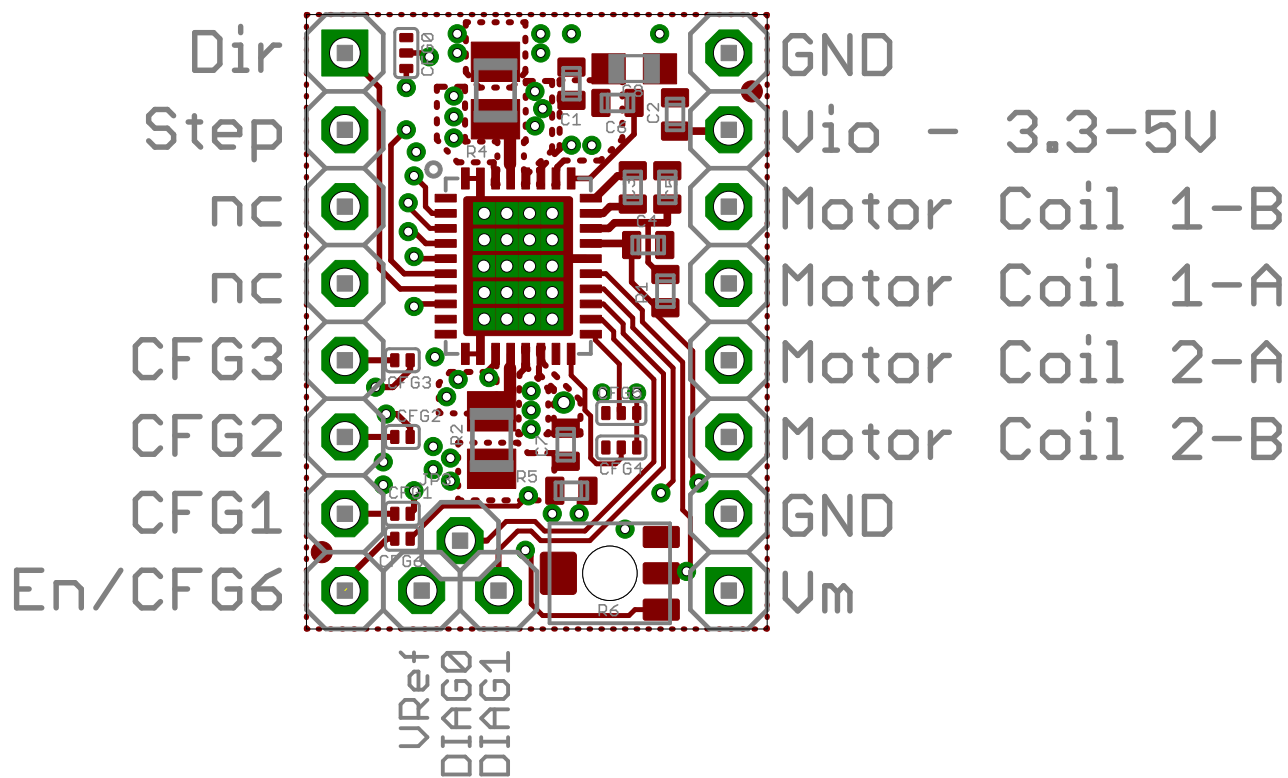
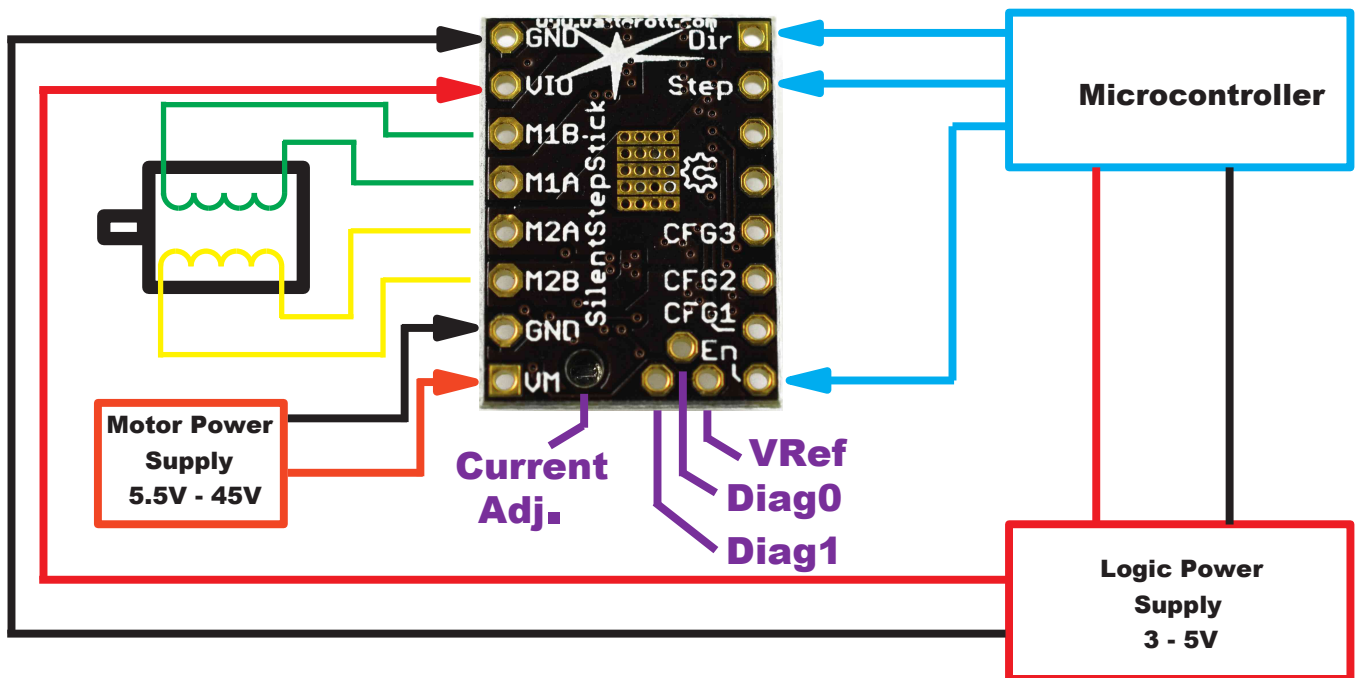


Component Side View (Bottom)



SilentStepStick

Pinout



Jumper Settings

Jumper

CFG0
CFG1
CFG2
CFG3
CFG4
CFG5
CFG6

Default

GND
Closed
Closed
Open
GND
VCC
Closed

Pin Header

Pin configuration for stealthChop mode with 16 microsteps and interpolation to 256 microsteps.

